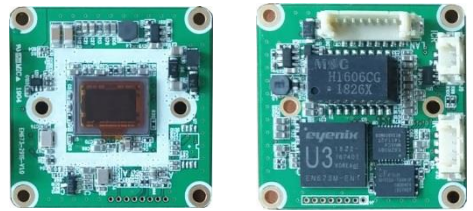


# Full HD(1080p) Mini IP BOARD CAMERA



- ✓ 2.07MP 1/2.8" Sony CMOS Sensor
- ✓ All in one board(32mm x 32mm)
- ✓ WDR, DNR, Digital Day & Night



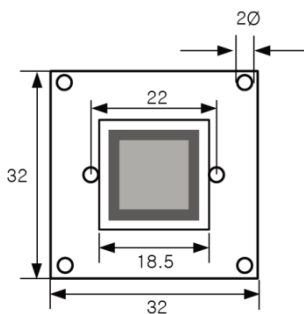
Model : LIP-201BD32



## Features

- Full HD (1080p) IP Network Board
- 1/ 2.8" 2MP Progressive CMOS sensor
- H.264 / MJPEG Dual Streaming
- Min. Illumination: 0.1Lux(Color)
- WDR, D&N, AGC, BLC, HLC, DNR, Sens-Up
- Motion Detection / Privacy Zone
- 32x32 one IP board
- DC12V, External PoE
- ONVIF Profile S Compliant

## Dimension(mm)



## Specifications

Camera	
Image Sensor	1/2.8" Progressive Scan CMOS Sensor (Sony IMX307)
Effective Pixels	1920(H) x 1080(V) approx. 2.13M pixels
Min. Illumination	Color Mode: 0.1 Lux B/W Mode: 0.01 Lux
Lens Type	M12 board lens (2.8mm/3.6mm/4.3mm/6mm/8mm)
Shutter Speed	1/25 ~ 30,000sec
Motion Detection	Yes( 4 areas)
Privacy Zone	Yes(4 areas)
Image Enhancement	AE, AWB, WDR, DNR, AGC, Brightness, Contrast, Stabilization, Sharpness, Day & Night, Sens-Up, BLC, HLC
Video	
Video Compression	H.264(Baseline/Main Profile), MJPEG
Streaming(Dual)	Primary(H.264) : Max. 1920x1080 Secondary(H.264 or MJPEG) : Max. 800x600
Resolution & Frame Rate	Primary(H.264) : 25fps@1080p/720p/800x600/640x480/320x240 Secondary(H.264 or MJPEG) : 25fps@800x600/640x480/320x240
Bit rate / Control	512Kbps ~ 10Mbps / CBR, VBR
Network	
Support Protocol	TCP/IP, UDP, IPv4, HTTP, DNS, NTP, IGMP, RTP/RTSP, DHCP, WS-Discovery, ONVIF Profile S
3 <sup>rd</sup> Party Integration	Onvif Profile S 2.4, CGI
Login Authority	Administrator, Operator, Viewer
Max. Streaming User	4
Interface	
Ethernet	10/100-Base-T Ethernet (Auto-Sensing)
GENERAL	
Dimensions	32mm x 32mm
Power Source	DC12V/1.6W
Operating Temp.	-10°C ~ (+)50°C
Operating Humidity	0~80%(non-condensing)

## Cable(Power & Data)

