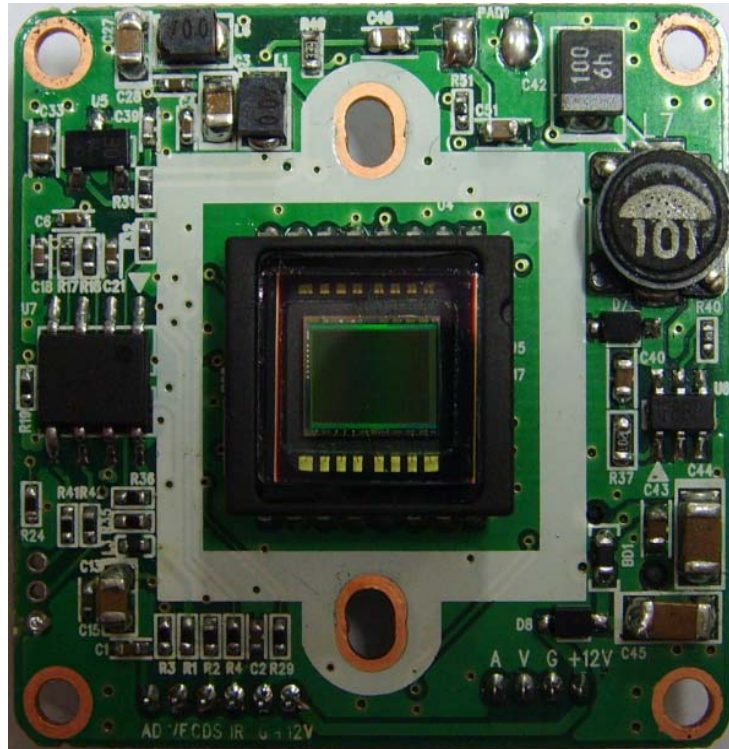




CUSTOMER'S ACCEPTANCE SPECIFICATIONS

MODEL	IM-209D32_960H
ITEM	32X32 DIGITAL COLOR CAMERA



Drafting	Examination	Decision

Record of Revision

Revision	Date	Description of Revision
1.0	2017.12.12	Establishment

Specifications

Item	NTSC	PAL
Imaging Sensor	1/3" SONY Super HAD CCD 11 (960H)	
Total Pixels	1028(H) X 508(V)	1028(H) X 596(V)
Effective Pixels	976(H) X 494(V)	976(H) X 582(V)
Scanning System	2:1 Interlace	
Scanning Frequency	H:15.734 kHz / V:59.94 Hz	H:15.625 kHz / V:50 Hz
S/N Ratio	More than 50dB (AGC Off)	
Horizontal Resolution	Horizontal : 700 TV-Line (Color)[Min] / 800 TV-Line (B/W)[Min]	
Video Output Level	1.0 Vp-p (75Ω, Composite)	
Min. Illumination	Color : 0.05Lux(50IRE@F1.2)	
O.S.D	Available	
Electronic Shutter Speed	Auto / Fik	
	(NTSC : 1/60sec ~ 1/100,000sec)	(PAL : 1/50sec ~ 1/100,000sec)
AGC	Low / Middle / High / Off	
DWDR	ON / Off (Level Adjustable)	
White Balance	ATW1 / ATW2 / AWC→SET / ANTI. CRL / MANUAL(MANUAL / INDOOR / OUTDOOR)	
Backlight Compensation	BLC / HLC / Off	
Day & Night	Auto / B.W / EXT / Color	
DPC	START	
Camera Title	On / Off (Selectable)	
Motion Detection	On / Off (4 Zone Selectable)	
Privacy Masking	On / Off (8 Zone Selectable)	
Parking Line	ON / Off (Level Adjustable)	
Image Adjust	Lens Shading / 2DNR / Mirror / Font color / Contrast / Sharpness Display(CRT,LCD,USER) / NEG.IMAGE	
Comm Adj	Protocol (PELCO-D / PELCO-P / NEXTCHIP) RS485 (Cam ID / Baud Rate : 2400 ~ 57600)	
Language	English / Chinese / Spanish / Russian Deutsch / portuguese / French / Japanese	
Supplied Voltage	DC12 ±10%	
Power Consumption	Max. 1.0W[80mA]	
Dimension	32(W)X32(H)X1.2(h) mm	
Operating temperature	-20°C +55°C	
Storage temperature	-25°C + 65°C	
Weight	10g	

OSD Menu Structure

MAIN MENU

MAIN MENU	DEFAULT SETTINGS	SUB MENU
1. LENS	MANUAL	MANUAL 1. BRIGHTNESS : 0~255 2. RETURN
2. EXPOSURE	SHUTTER : NTSC AUTO, PAL AUTO	SHUTTET : AUTO / 1/50,60 / FLK / 1/250~1/100000
	AGC : MIDDLE	OFF / LOW / MIDDLE / HIGH
	DWDR : OFF	ON / OFF ON 1. LEVEL : 0~63 2. RETURN
3. WHITE BAL	ATW1	ATW1 / ATW2 / AWC→SET / ANTI. CRL / MANUAL MANUAL 1. COLOR TEMP : MANUAL / OUTDOOR / INDOOR 2. BLUE : 0~255 3. RED : 0~255 4. RETURN
4. BACKLIGHT	OFF	BLC 1. AREA SEL. : AREA1 / AREA2 2. AREA STATE : ON / OFF 3. GAIN : 0~255 4. HEIGHT : 0~15 5. WIDTH : 0~15 6. LEFT/RIGHT : 0~15 7. TOP/BOTTOM : 0~15 8. RETURN
		HLC 1. LEVEL : 0~255 2. MODE : ALL DAY / NIGHT ONLY 3. MASK SKIP : ON/OFF 1) HEIGHT : 0~15 2) WIDTH : 0~15 3) LEFT/RIGHT : 0~15 4) TOP/BOTTOM : 0~15 5) RETURN 4.RETURN
5. DAY&NIGHT	AUTO	COLOR / AUTO / B/W / EXT
		AUTO 1. D→N LEVEL : 128~192 2. D→N DELAY : 1~30 SEC 3. N→D LEVEL : 0~64 4. N→D DELAY : 1~30 SEC 5. RETURN

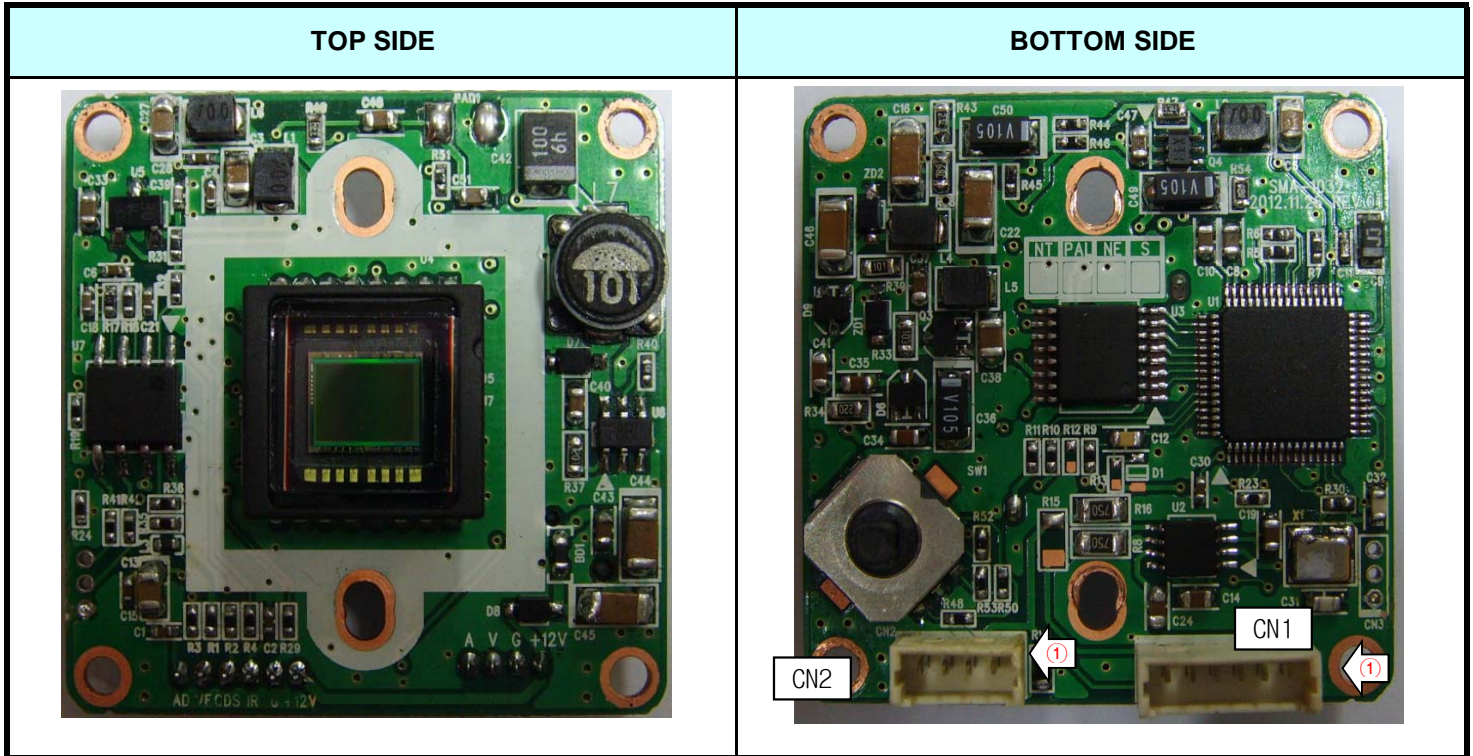
		<p>B/W</p> <p>1. BURST : ON / OFF</p> <p>2. IR SMART : ON / OFF</p> <p> 1) IR GAIN : 0~255</p> <p> 2) HEIGHT : 0~15</p> <p> 3) WIDTH : 0~15</p> <p> 4) LEFT/RIGHT : 0~15</p> <p> 5) TOP/BOTTOM : 0~15</p> <p> 6) RETURN</p> <p>3. IR LEVEL : LOW / HIGH</p> <p>4. RETURN</p>
		<p>EXT</p> <p>1. D→N DELAY : 1~30 SEC</p> <p>2. N→D DELAY : 1~30 SEC</p> <p>3. RETURN</p>
6. DPC		<p>START</p> <p>DPC VIEW : ON / OFF</p> <p>LS VALUE : 0~63</p> <p>DIFF. : 0~63</p> <p>AREA HS : 1~255</p> <p>AREA HE : 1~255</p> <p>AREA VS : 1~255</p> <p>AREA VE : 1~255</p> <p>RETURN</p>
7. SPECIAL	Refer to the next page	
8. EXIT	SAVE	SAVE / NOT SAVE / RESET

SPECIAL MENU

FUNCTION	DEFAULT SETTINGS	SUB MENU
1. CAM TITLE	OFF	ON / OFF ON : 0~9 , A~Z
2. MOTION	OFF	ON / OFF ON 1. AREA SEL. : AREA1 / AREA2 / AREA3 / AREA4 2. AREA STATE : ON / OFF 3. HEIGHT : 0~15 4. WIDTH : 0~15 5. LEFT/RIGHT : 0~15 6. TOP/BOTTOM : 0~15 7. DEGREE : 0~255 8. VIEW : ON / OFF 9. RETURN
2. PRIVACY	OFF	ON / OFF ON 1. AREA SEL. : AREA1 / AREA2 / AREA3 / AREA4 AREA5 / AREA6 / AREA7 / AREA8 2. AREA STATE : ON / OFF 3. HEIGHT : 0~255 4. WIDTH : 0~255 5. LEFT/RIGHT : 0~255 6. TOP/BOTTOM : 0~255 7. COLOR : 0~15 8. RETURN
3. PARK. LINE	OFF	ON / OFF ON 1. LT : 0~137 2. LB : 0~180 3. RT : 79~255 4. RB : 25~255 5. F : 0~255 6. N : 0~255 7. T : 1~15 8. V1 : 0~255 9. V2 : 0~255 10. V3 : 0~255 11. RETURN
4. IMAGE ADJ.	1. LENS SHAD. : OFF	ON / OFF ON 1. LEVEL : 0~255 2. H-CENTER : 0~255 3. V-CENTER : 0~255 4. TIME : 0 ~ 15 5. RETURN

	2. 2DNR : ON	ON / OFF ON 1. LEVEL : 0~15 5. RETURN
	3. MIRROR : OFF	ON / OFF
	4. FONT COLOR	FONT : 0~15 ID&TITLE : 0~15 RETURN
	5. CONTRAST	0~255
	6. SHARPNESS	0~31
	7. DISPLAY	CRT / LCD / USER
		CRT 1. PED LEVEL : 0~63 2. COLOR GAIN : 0~255 3. RETURN
		LCD 1. GAMMA : 0.30 ~1.00 2. PED LEVEL : 0~63 3. COLOR GAIN : 0 ~ 255 4. RETURN
		USER 1. GAMMA : 0.30 ~1.00 2. PED LEVEL : 0~63 3. COLOR GAIN : 0 ~ 255 4. RETURN
	8. NEG. IMAGE	ON / OFF
	9. RETURN	RET
5. COMM ADJ.	1. CAM ID : 001	000~255
	2. BAUD RATE : 9600	2400 / 4800 / 9600 / 19200 / 38400 / 57600
	3. PROTOCOL : PELCO-D	PELCO-D / PELCO-P / NEXTCHIP
	4. DISPLAY ID : OFF	ON / OFF
	5. ID POS	
	6. RETURN	RET
6. LANGUAGE	ENGLISH	English / Chinese / Spanish / Russian Deutsch / portuguese / French / Japanese
7. VERSION	00 00 00	
8. RETURN	RET	RET / SAVE&END

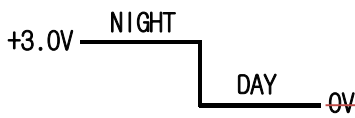
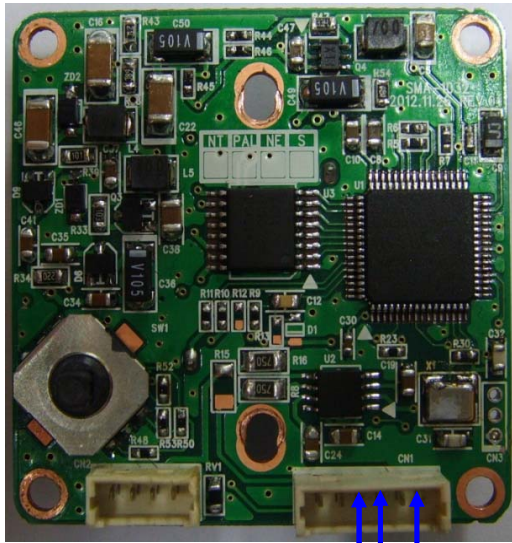
Input-Output Signal



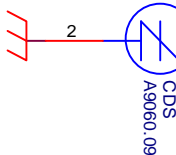
NO	CN1 (6 PIN) (53047-0610)		CN2 (4 PIN) (53047-0410)				
1	AD-KEY	IN	AUDIO	OUT			
2	VIDEO_EXTRA	OUT	VIDEO	OUT			
3	CDS_IN	IN	GND	-			
4	IR ON/OFF	OUT	+12V	IN			
5	GND	-					
6	+12V	IN					
7							
8							
9							
10							
11							
12							
13							
14							
15							

CONNECTOR WAFER : MOLEX

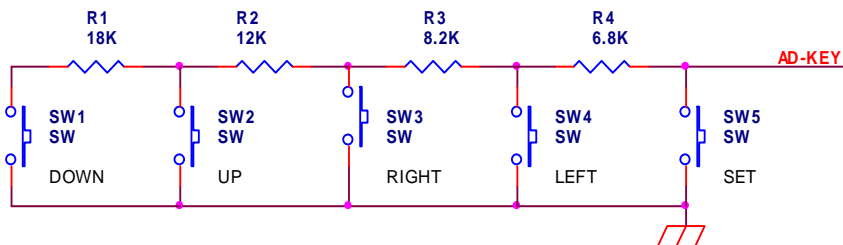
Application



CN1 4번PIN
IR-LED OUT



CN1 3번PIN
CDS-IN
(CDS INPUT 프로그램 적용시 사용가능)



Dimensions

