

Model
PC 2005

COLOUR

CCD BOARD CAMERA

D-mount



Model : **PC 2005 (PAL)**

- 22 x 26 mm single board camera
- 1/4 " CCD Colour DSP Camera
- Low Voltage (5VDC)
- Extremely Compact
- I²C control via Software:
- High Resolution

Specifications

Image sensor :
Effective pixels :
TV system :

1/4 " Inter-line type colour CCD image sensor
752 (H) x 582 (V) – 437.664 pixels
PAL

Video Output :
Scanning system :
Synchronisation :
Horizontal resolution :
Min. Illumination :
S/N ratio :

VBS 1,0 Vpp sync. Negative 75 ohms unbalanced
2 : 1 interlace
Internal (Quartz)
more than 450 TV lines
1.0 Lux max. (Output level 50% / AGC ON / F1,4)
better than 45 dB (AGC Off)

Electronic Iris :
White Balance :
Gamma :

1/50 sec. 1/100.000 sec.
Auto White Balance
0,45

Power supply :
Current consumption :
Operation :
Storage :

DC +5 V
160 mA (at DC 5 V)
-5 °C to +45 °C max. 80% humidity
-20 °C to +60 °C max. 90% humidity

Built-in lens :
Lens Options :

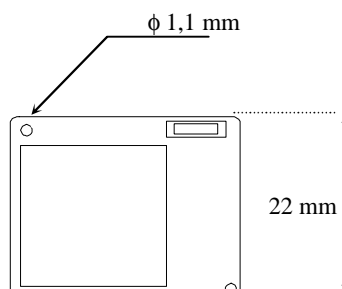
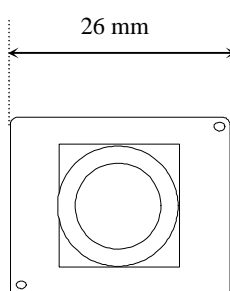
f=3,0mm F2,8 D-mount lens
f=1,9mm ; f=4,0mm, f=6,0mm ; f=8,0mm ; f=12,0mm

Weight :

Pin hole: f=3,7mm
10 g. without lens

Dimensions

26 x 22 mm



Connector
1 - +5VDC
2 - GND
3 - Video Out
4 - GND
5 - factory setting
6 - factory setting