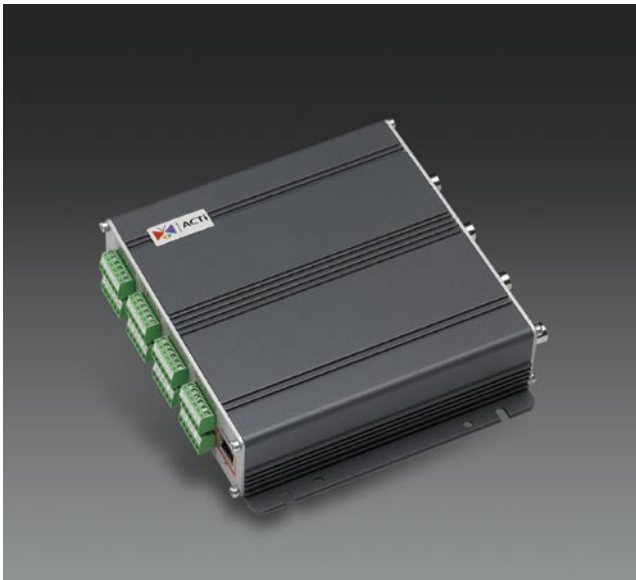


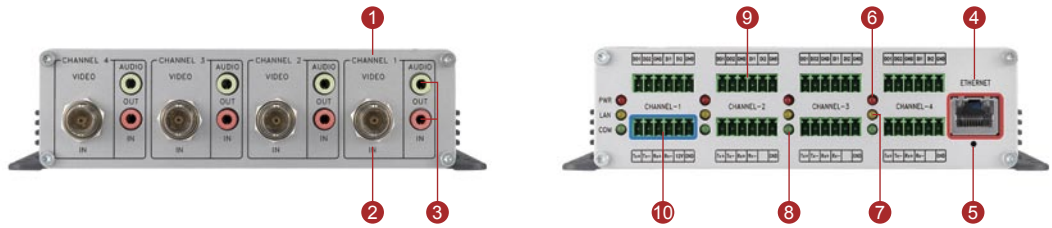


Four-channel Video Server with Two Way Audio

ACD-2200

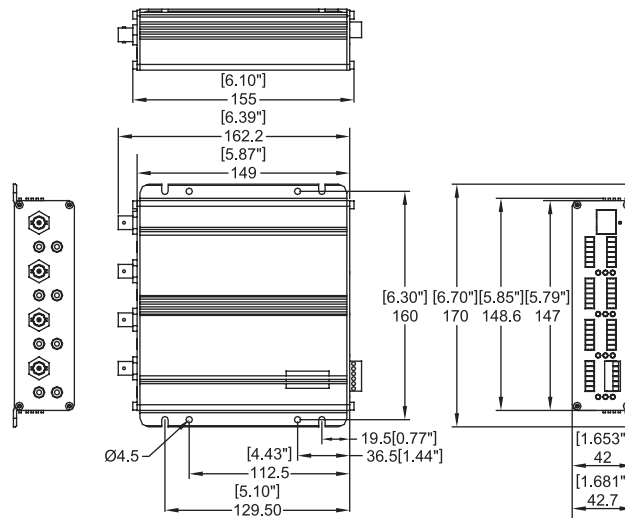


- Selectable MPEG-4 / MJPEG compression
- CIF up to Full D1 resolution at 30/25 FPS
- Multi-stream with variable frame rate in the same compression
- Two way audio supported (per channel)
- Hardware motion detection, Digital Input / Output (per channel)
- Serial ports for each channel



- | | | | |
|------------------|------------------------|-----------------|-------------------------------------|
| ① Channel Number | ③ Audio Input / Output | ④ Ethernet Port | ⑧ RS-485 LED |
| ② Video Input | | ⑤ Reset Button | ⑨ Digital Input / Output |
| | | ⑥ Power LED | ⑩ Serial Port & DC 12 V Power Input |
| | | ⑦ LAN LED | |

DIMENSION DIAGRAM



Unit: mm [inch]

**PRODUCT SPECIFICATION**

Video Compression		External I/O	
Compression	MPEG-4 SP, MJPEG selectable	Reset Button	Factory default
Picture Resolution	Full D1 (720 x 480 in NTSC, 720 x 576 in PAL) VGA (640 x 480 in NTSC, 640 x 480 in PAL) CIF (352 x 240 in NTSC, 352 x 288 in PAL) QCIF (176 x 120 in NTSC, 176 x 144 in PAL) (per channel)	LED	System status (per channel)
Bit Rate	28K ~ 3M bps (per channel)	Network	
Image Frame Rate	30fps at full D1 resolution (NTSC) 25fps at full D1 resolution (PAL) (per channel)	Ethernet Port	Ethernet (10/100 Base-T), RJ-45 connector
Multi-stream	Up to 2 configurable frame rate/bit rate streams for preview and recording (per channel)	Protocol	TCP, UDP, IP, HTTP, DHCP, PPPoE, RTP, RTSP, FTP, SMTP, DNS, DDNS, NTP, ICMP, IGMP, ARP
Video Input		Software	
Composite Input	4, CVBS, 1.0Vp-p with 75Ω loading, BNC Connector	Web Browser	Microsoft Internet Explorer 6.0 or above
Audio Input		SDK	ACTi SDK-10000
Compression	8 kHz, Mono, PCM	PTZ Protocol*	Pelco-P_type1, Pelco-P_type2, Pelco-D, Dynacolor, Samsung, VCL, Videotrek, Kampro-V1, Kampro-V2
Audio Line Input	4, Unbalanced, 1.4 Vp-p, 1Vrms, 3.5 mm Phone Jack	Security	Password protection: configured by the administrator
Audio Output		Operating	
Compression	8 kHz, Mono, PCM	Temperature	0 °C ~ 40 °C (32 °F ~ 104 °F)
Audio Line Output	4, Unbalanced, 1.4 Vp-p, 1Vrms, 3.5 mm Phone Jack	Power	
Alarm		Power Requirement	DC 12 V ±10%
Input	2, TTL, terminal block (per channel)	Power Consumption	16 W
Output	2, TTL, terminal block (per channel)	Physical	
Remote Control		Dimensions (WxHxD)	170 mm x 42.7 mm x 149 mm (6.70" x 1.68" x 5.87")
Serial Port	RS-485: half duplex, terminal block RS-422: full duplex, terminal block RS-232**: full duplex, terminal block (per channel)	Weight	820 g (1.80 lb)

* These PTZ protocols are supported in ACTi NVR and Streaming Explorer.
** Adjust by inside jumper.

ORDERING INFORMATION

Model Name	Description
ACD-2200	Wallmount Type 4-channel MPEG-4 Video Server with Two Way Audio