

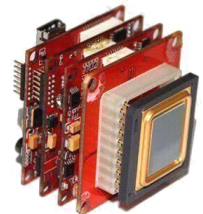
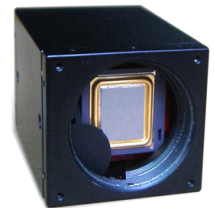


Caméra Thermique Miniature

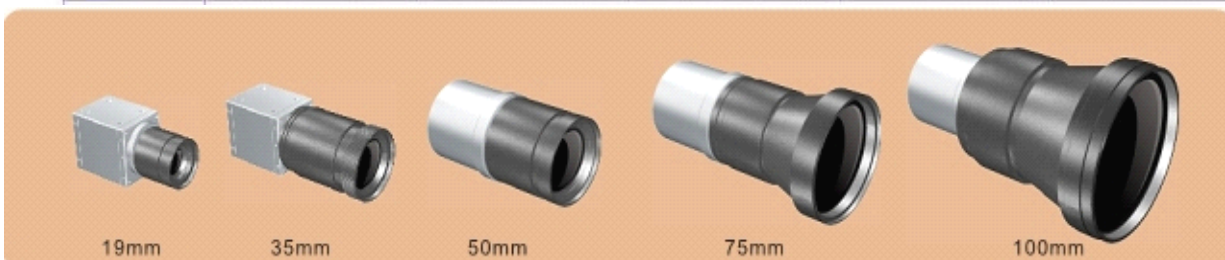


Thermal Imaging Core

	K20AM	K30AM	
Detector characteristics	Detector type	Uncooled FPA microbolometer α -Si	
	Array size	160x120, 25um	384x288, 25um
	Spectral range	8—14 um.	
	Thermal response time	7ms	
	Bad pixel	1%	
Image	Lens	option	
	NETD	$\leq 80\text{mk}@25^{\circ}\text{C}$	
	Frame rate	50Hz(PAL) / 60Hz(NTSC)	
	Calibration	Auto/manual	
	Electronic zoom	x2 interpolating	
	Polarity	B&W	
	Video Output	BNC	
Environment	Operating temperature	$-40^{\circ}\text{C} - +60^{\circ}\text{C}$	
	Storage temperature	$-50^{\circ}\text{C} - +65^{\circ}\text{C}$	
Power supply	Input Voltage	12V DC	
	Power dissipation	3.5W(standard)	
Physical characteristics	Weight(core only)	0.027Kg	
	Size(core only)	35x35mm	



Lens		19mm	35mm	50mm	75mm	100mm
FOV	K20M	12(H) x 9(V)	6.5(H) x 5(V)	4.6(H) x 3.4(V)	<i>N</i>	<i>N</i>
	K30M	29(H) x 22(V)	15.7(H) x 11.8(V)	11(H) x 8.3(V)	7.3(H) x 5.5(V)	5.5(H) x 4(V)



19mm

35mm

50mm

75mm

100mm